



Selection and ordering data

Maximum inductive current AC-3	Maximum power ratings					IEC ratings 1000 V	Max. resistive current AC-1	Auxiliary contacts		Rated control supply voltage ¹⁾	Order No.	Weight approx. kg
	UL Ratings							A	NO			
A	200 V	230 V	460 V	575 V		kW	A			V		

AC operation ^{2) 3)}

3TF68



Size 14

Auxiliary and control conductors: screw terminals

Main conductor: bar connections

• AC Operation

630	200	250	500	600	600	700	4	4	110-132, 50/60 Hz	3TF6844-■CF7	15
630	200	250	500	600	600	700	4	4	200-240, 50/60 Hz	3TF6844-■CM7	15
820	290	350	700	860	800	910	4	4	110-132, 50/60 Hz	3TF6944-■CF7	19
820	290	350	700	860	800	910	4	4	200-240, 50/60 Hz	3TF6944-■CM7	19

UL ratings shown in above table:
For IEC use only up to 1000 V:

■=0
■=8

• DC Operation

630	200	250	500	600	600	700	3	3	24 VDC	3TF6833-■DB4	16.9
820	290	350	700	860	800	910	3	3	24 VDC	3TF6933-■DB4	20.9

UL ratings shown in above table:
For IEC use only up to 1000 V:

■=1
■=8

Accessories and Spare parts for 3TF68 and 3TF69 vacuum contactors

Selection and ordering data

Details	For contactor type	Order No.	Weight approx. kg
---------	--------------------	-----------	-------------------

Coils



3TY7

AC Operation

The coils are fitted with varistors for damping surges as standard; the coil is supplied with the closing electronics included.

3TF68
3TF69

3TY7683-0C●●
3TY7693-0C●●

0.65

DC Operation

Reversing contactors are required for size 14 contactors:

Contactor type Reversing contactor type
3TF68 and 3TF69: 3TC44 (70 mm wide, 85 mm high)

3TF68
3TF69

3TY7683-0D●●
3TY7693-0D●●

0.56

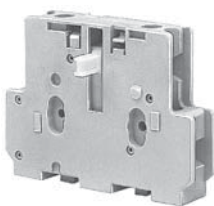
The coils are supplied without a reversing contactor.

●● For rated control supply voltages, see page 2/102.

Vacuum interrupters

In order to ensure reliable operation of the contactors, only Siemens original replacement interrupters should be used.	3TF68 3TF69	3TY7680-0B 3TY7690-0B	3.2 3.5
-------------------------------------------------------------------------------------------------------------------------	----------------	----------------------------------------	------------

Auxiliary switch blocks with screw terminals



3TY7561-1.

1 NO and 1 NC	First auxiliary switch block, left or right. Replacement type for: 3TY7561-1A, -1B	3TF68 / 3TF69	3TY7561-1AA00	0.042
1 NO and 1 NC	First auxiliary switch block, left or right late break	3TF68 / 3TF69	3TY7561-1EA00	0.042
1 NO and 1 NC	Second auxiliary switch block, left or right. Replacement type for: 3TY7561-1K, -1L	3TF68 / 3TF69	3TY7561-1KA00	0.042
Auxiliary switches for coil reconnection, for DC economy circuit with screw connections	1 NC Auxiliary switch block late break	3TF68 / 3TF69	3TY7681-1G	0.042
Solid-state compatible auxiliary switch block with screw terminals	For mounting onto the side of contactors. For use in dusty atmosphere and electronic circuits with rated operational currents ^{1/6} AC-14 and DC-13 from 1 mA to 300 mA at 3 V to 60 V.	3TF68 / 3TF69	3TY7561-1UA00	0.042

For accessories, see page 2/53-2/54.
For technical data, see page 2/172-2/177.
For description, see page 2/117.
For internal circuit diagrams, see page 2/211.
For position of terminals, see page 2/208
For dimension drawings, see page 2/221.

1) For further voltages, see page 2/102.
2) Surge suppression integrated: fitted with varistor.
3) For EMC, see description on page 2/117.
3TF68/69 vacuum contactors are supplied with integrated surge suppression for the main conducting paths (for description, see page 2/117). In operation in circuits with DC choppers, frequency converters, variable-speed drives, for example, this protective circuitry is not required. It might be damaged by voltage peaks and harmonics generated, possibly followed by phase-to-phase shortcircuits. For this reason, the contactors can be supplied without overvoltage damping. To order these versions add a "Z" and the order code "A02".






Contactor and Contactor Assemblies

Contactors for Switching Motors



Accessories and Spare parts for 3TF68 and 3TF69 vacuum contactors

Selection and ordering data

For contactor		Design	Order No.	Weight approx. kg	Std. Pack Qty
Size	Type				
Interface for control by PLC					
3TX7 090-0D		Coil voltage tolerance: DC 17 V to 30 V Power consumption: 0.5 W at DC 24 V Fitted with varistor For technical data, see Part 7.			
	14	3TF68 and 3TF69	For snapping onto the side of auxiliary switch blocks, with surge suppression	3TX7 090-0D	0.1 1
Terminal covers					
3TX7 686-0A	14	3TF68	for protection against inadvertent contact with the exposed busbar connections (DIN VDE 0106 Part 100)"	(Order No. and price per set) 3TX7 686-0A	0.17 1 set = 2 units
		3TF69		3TX7 696-0A	
Link for paralleling (star jumper) - 3-pole, without terminal 1)					
3TX7 680-0D	14	3TF68		3TX7 680-0D	0.26 1
					
	14	3TF68	Cover plate for paralleling link A cover plate must be used in order to protect against inadvertent contact (DIN VDE 0106 Part 100).	3TX7 680-0E	0.18 1
Box terminals for laminated copper bars					
3TX7570-1E		Without auxiliary conductor terminal			
	14	3TF68	With single covers for protection against inadvertent contact (EN 50274)	3TX7 570-1E	0.6 1
		With auxiliary conductor terminal			
	14	3TF69	Conductor cross-sections for auxiliary conductors: Solid: 2 × (0.75 ... 2.5) mm ² Finely stranded with end sleeve: 2 × (0.5 ... 2.5) mm ² Solid or stranded: 2 × (18 ... 12) AWG Tightening torque: 0.8 Nm ... 1.4 Nm (7 ... 12 lb.in)	3TX7 690-1F	2.0 1
Surge suppressors — Varistors					
3TX7 572-3G	14	3TF68 and 3TF69	For DC economy circuit; for lateral snapping onto auxiliary switches	<i>Rated control supply voltage, V_{DC}</i> 24 ... 48 48 ... 127 127 ... 240	3TX7 572-3G 3TX7 572-3H 3TX7 572-3J
			The varistor is included in the scope of supply of the 3TF68 and 3TF69 contactors with AC operation. Includes the peak value of the alternating voltage on the DC side.		0.09 1 0.09 1 0.09 1

1) The link for paralleling can be reduced by one pole.