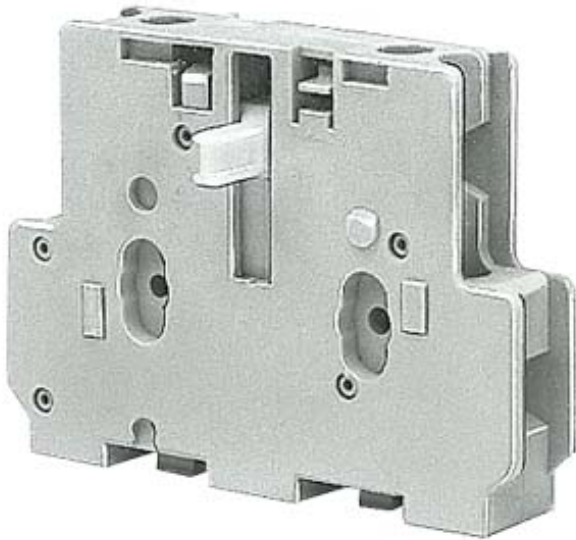


2ND AUXILIARY CONTACT BLOCK FOR SIZE 3 TO 12



General technical data	
<b>Suitability for use</b>	Contactor relay and power contactor
<b>Protection class IP on the front</b>	IP20
<b>Ambient temperature</b>	
• during storage	-55 ... +80 °C
• during operation	-25 ... +55 °C
<b>Mechanical service life (switching cycles) typical</b>	10 000 000
<b>Insulation voltage with degree of pollution 3 rated value</b>	690 V
<b>Surge voltage resistance rated value</b>	6 kV
Auxiliary circuit	
<b>Number of NC contacts for auxiliary contacts</b>	
• instantaneous contact	1
• lagging switching	0
<b>Number of NO contacts for auxiliary contacts</b>	
• instantaneous contact	1
• leading contact	0
<b>Operating current of auxiliary contacts at AC-12</b>	

<ul style="list-style-type: none"> <li>• at 24 V</li> <li>• at 230 V</li> <li>• maximum</li> </ul>	<p>10 A</p> <p>10 A</p> <p>10 A</p>
<b>Operating current</b> <ul style="list-style-type: none"> <li>• of auxiliary contacts <ul style="list-style-type: none"> <li>— at AC-14</li> <li>— at 125 V</li> <li>— at AC-15</li> <li>— at 24 V</li> <li>— at 230 V</li> <li>— at 400 V</li> </ul> </li> <li>• at AC-15 at 690 V rated value</li> </ul>	<p>10 A</p> <p>10 A</p> <p>5.6 A</p> <p>3.6 A</p> <p>2.3 A</p>
<b>Operating current</b> <ul style="list-style-type: none"> <li>• of auxiliary contacts at DC-13 <ul style="list-style-type: none"> <li>— at 24 V</li> <li>— at 60 V</li> <li>— at 110 V</li> <li>— at 220 V</li> </ul> </li> </ul>	<p>10 A</p> <p>5 A</p> <p>1.14 A</p> <p>0.48 A</p>

Installation/ mounting/ dimensions	
<b>Mounting type</b>	snap-on mounting
<b>Width</b>	12 mm
<b>Height</b>	70 mm
<b>Depth</b>	51.5 mm

Connections/Terminals	
<b>Type of electrical connection for auxiliary and control current circuit</b>	screw-type terminals
<b>Type of connectable conductor cross-sections</b> <ul style="list-style-type: none"> <li>• for auxiliary contacts <ul style="list-style-type: none"> <li>— finely stranded</li> <li>— with core end processing</li> </ul> </li> <li>• at AWG conductors for auxiliary contacts</li> </ul>	<p>2x (0.5 ... 1.0 mm<sup>2</sup>), 2x (0.75 ... 2.5 mm<sup>2</sup>)</p> <p>2x (18 ... 12)</p>

Safety related data	
<b>Product function positively driven operation acc. to IEC 60947-5-1</b>	Yes

### Certificates/approvals

General Product Approval	Functional Safety/Safety of Machinery
--------------------------	---------------------------------------



[Baumusterprüfbescheinigung](#)

[Baumusterbescheinigung](#)

Test Certificates	Shipping Approval	other
-------------------	-------------------	-------

[spezielle Prüfbescheinigungen](#)



[Bestätigungen](#)

### Further information

**Information- and Downloadcenter (Catalogs, Brochures,...)**

<http://www.siemens.com/industrial-controls/catalogs>

**Industry Mall (Online ordering system)**

<https://mall.industry.siemens.com/mall/en/en/Catalog/product?mlfb=3TY7561-1KA00>

**Cax online generator**

<http://support.automation.siemens.com/WW/CAXorder/default.aspx?lang=en&mlfb=3TY7561-1KA00>

**Service&Support (Manuals, Certificates, Characteristics, FAQs,...)**

<https://support.industry.siemens.com/cs/ww/en/ps/3TY7561-1KA00>

**Image database (product images, 2D dimension drawings, 3D models, device circuit diagrams, EPLAN macros, ...)**

[http://www.automation.siemens.com/bilddb/cax\\_de.aspx?mlfb=3TY7561-1KA00&lang=en](http://www.automation.siemens.com/bilddb/cax_de.aspx?mlfb=3TY7561-1KA00&lang=en)

last modified:

02/10/2017